



PROPERTIES

Interstate Highway 37

Atascosa County

\$750,000

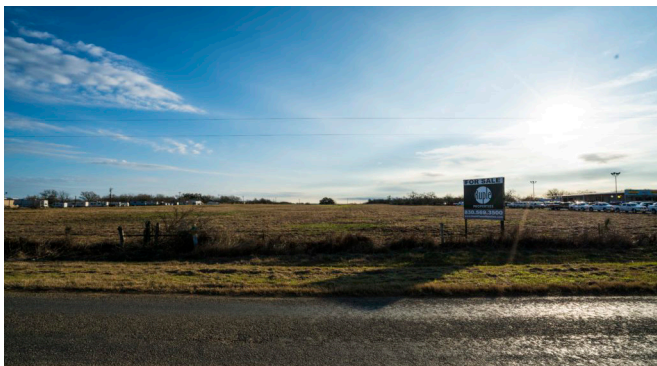
35 +/- acres

Location provides exceptional visibility and exposure.

Roughly 570' of Interstate Highway 37 frontage.

co-op water line as well as a single-phase power line along the frontage road.

Three-phase power lines down the side and across the rear of the property.



Garrett Ruple
Broker/Owner

979-220-4326
garrett@rupleproperties.com

Buy land. Live well.